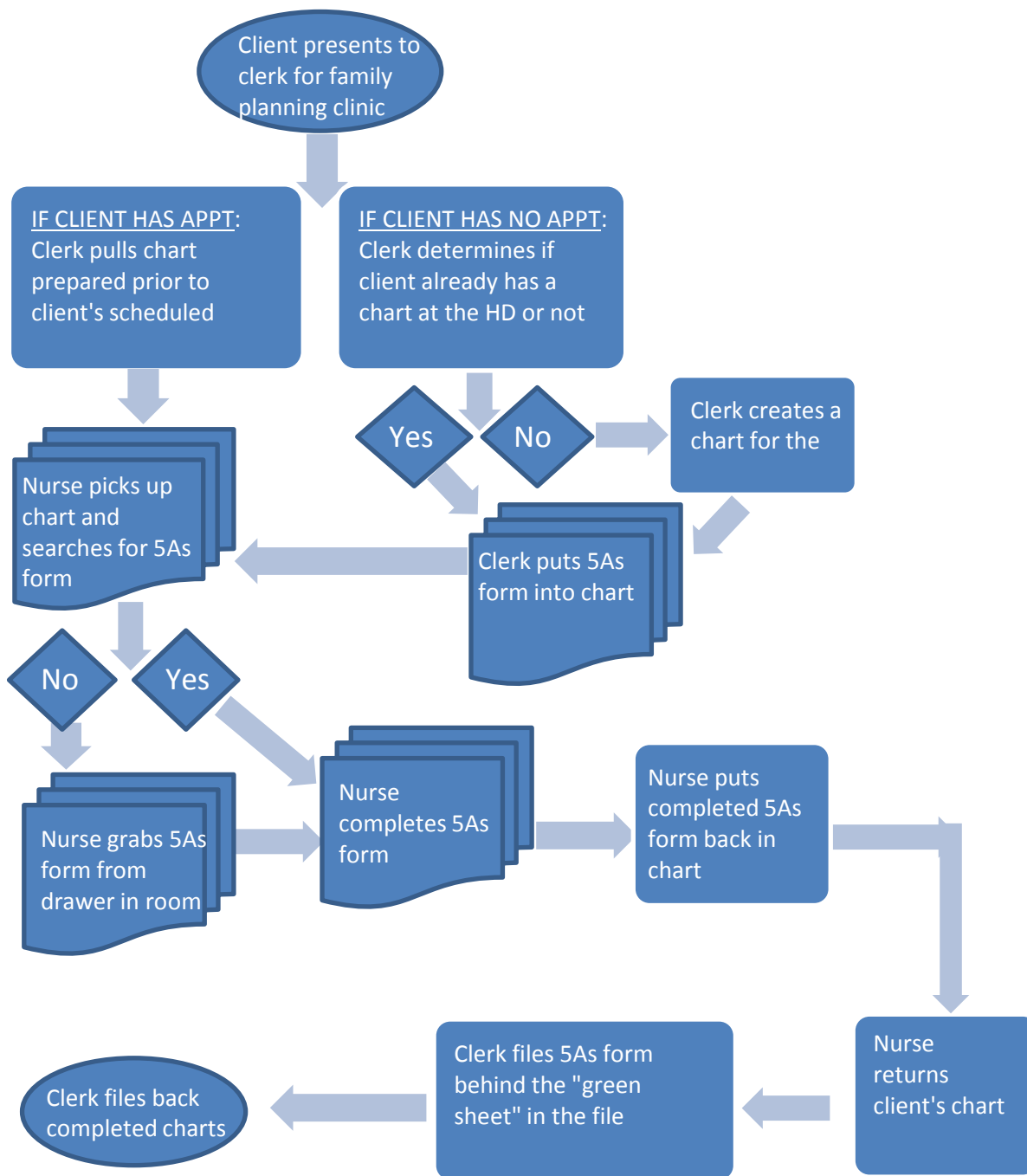


FLOW CHART OF THE 5As CLINIC PROCESS  
**MOORE (FAMILY PLANNING/GENERAL CLINIC)**

May 2012



**Process Insights:**

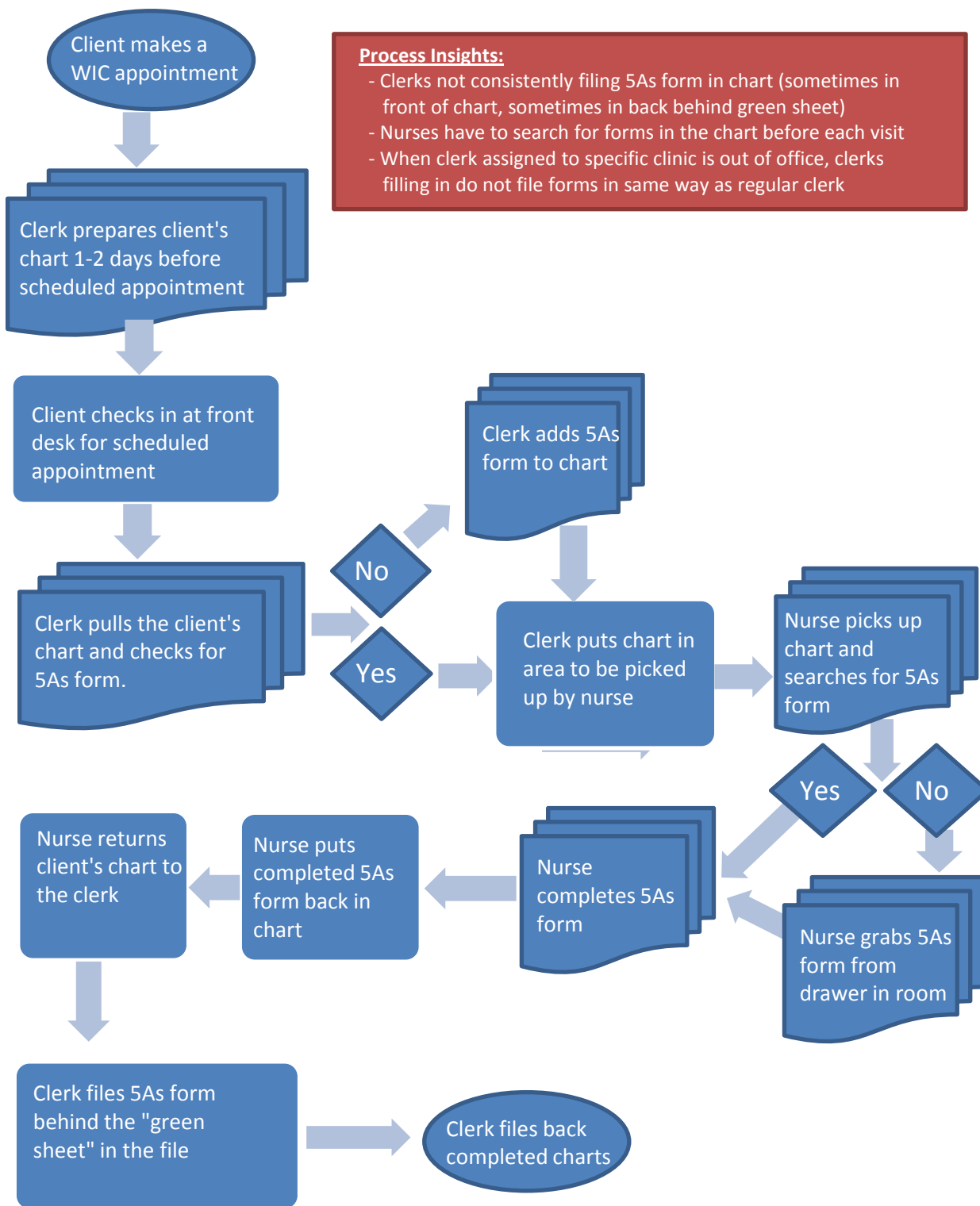
- Clerks not consistently filing 5As form in chart (sometimes in front of chart, sometimes in back behind green sheet)
- Nurses have to search for forms in the chart before each visit
- When clerk assigned to specific clinic is out of office, clerks filling in do not file forms in same way as regular clerk

**Possible Added Value Steps:**

- Place 5As form in front of each chart for nurse before appointment; Prefer before Progress Note
- Add a prompt to regular screening forms indicating nurse should complete 5As form

FLOW CHART OF THE 5As CLINIC PROCESS  
MOORE (WIC CLINIC)

May 2012



**Process Insights:**

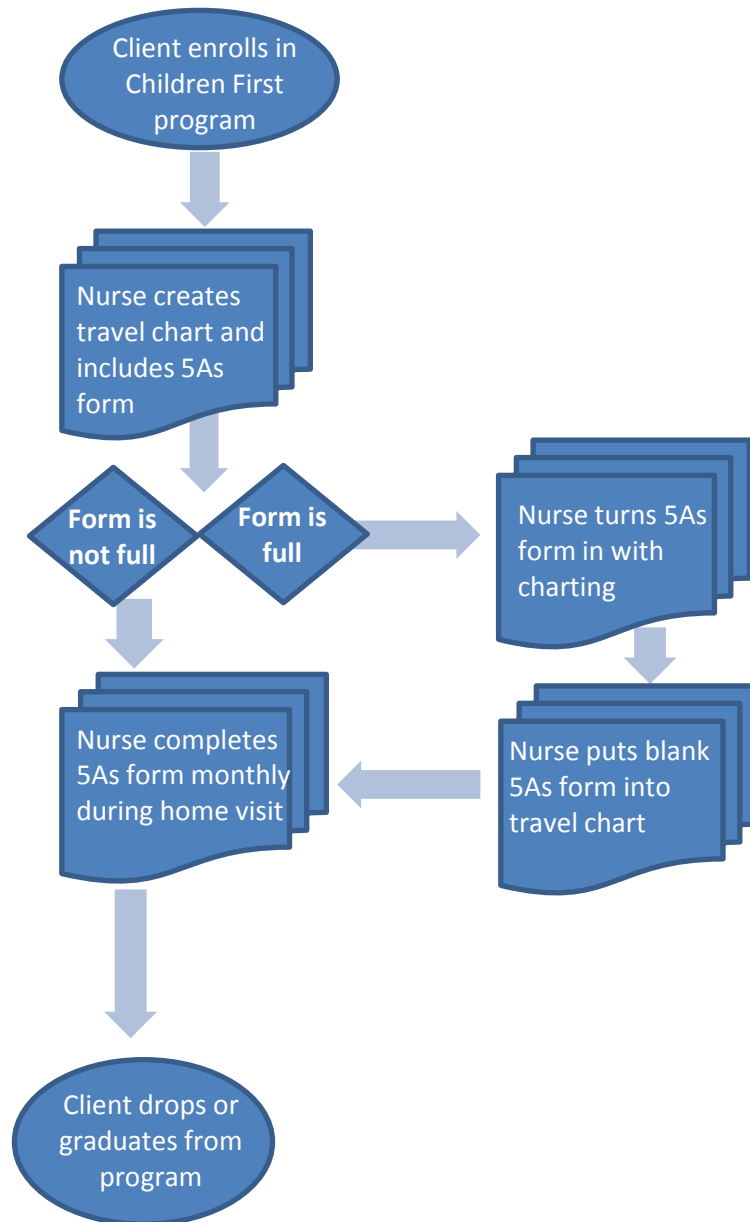
- Clerks not consistently filing 5As form in chart (sometimes in front of chart, sometimes in back behind green sheet)
- Nurses have to search for forms in the chart before each visit
- When clerk assigned to specific clinic is out of office, clerks filling in do not file forms in same way as regular clerk

**Possible Added Value Steps:**

- Place 5As form in front of each chart for nurse before appointment; Prefer before Progress Note
- Add a prompt to regular screening forms indicating nurse should complete 5As form

FLOW CHART OF THE 5As PROCESS  
NORMAN (Children First Program)

May 2012

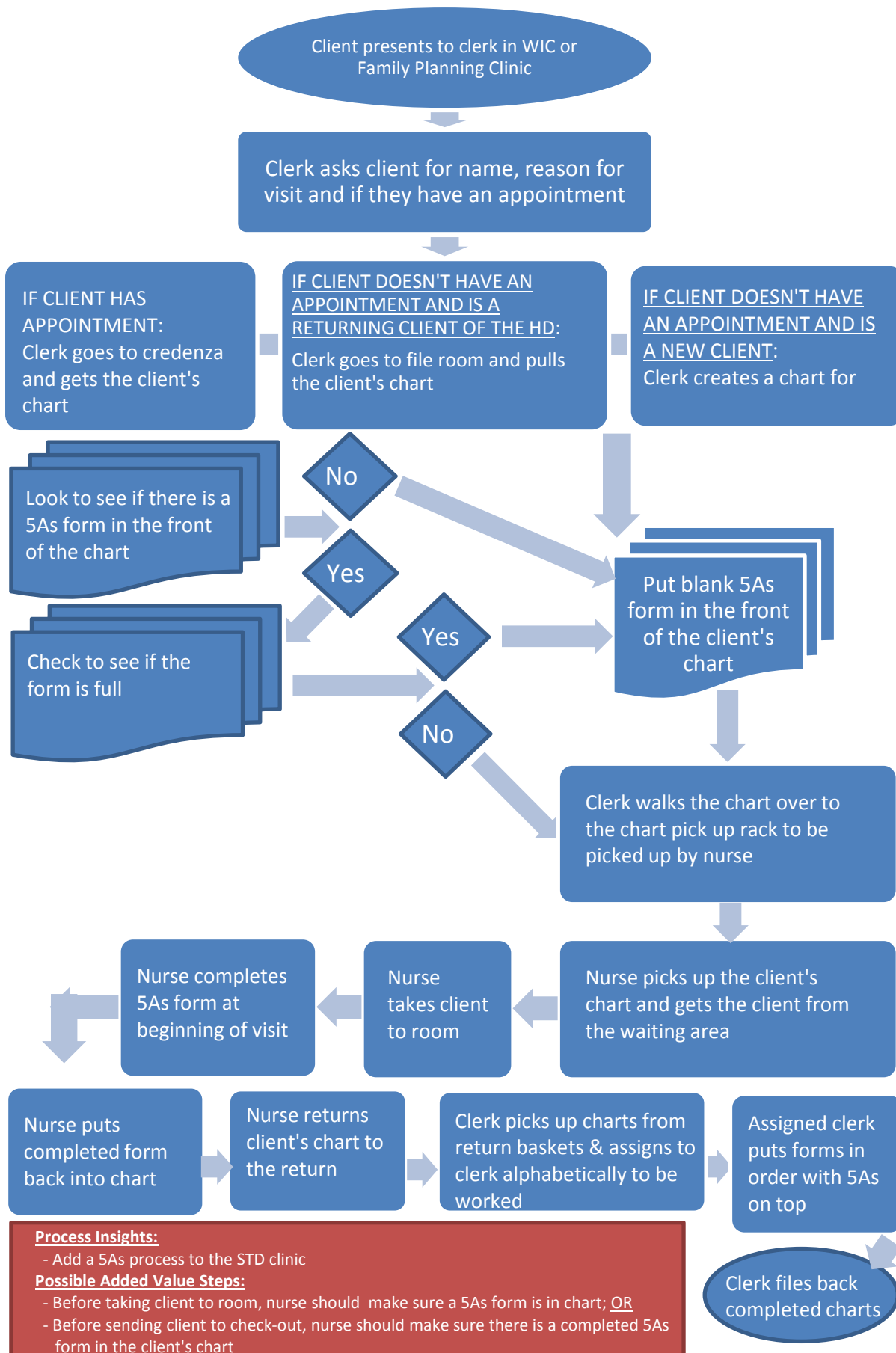


**Process Insights:**

- Records of all active clients audited quarterly. If not properly completing 5As form, nurse is instructed how to properly do so.

FLOW CHART OF THE 5As CLINIC PROCESS  
 NORMAN (WIC FAMILY PLANNING CLINICS)

May 2012



**Process Insights:**  
 - Add a 5As process to the STD clinic

**Possible Added Value Steps:**  
 - Before taking client to room, nurse should make sure a 5As form is in chart; OR  
 - Before sending client to check-out, nurse should make sure there is a completed 5As form in the client's chart