



Creating a State of Health

Logan County QI Collaborative Quality Improvement Storyboard



PLAN

Identify an opportunity and plan for improvement

1. Getting Started

- Integrate quality improvement into public health.
- Look at ways to enhance community partnerships.
- Lack of a community health plan.
- Mobilizing for action through planning and partnerships.
- New way to look at and engage all partners in public health.

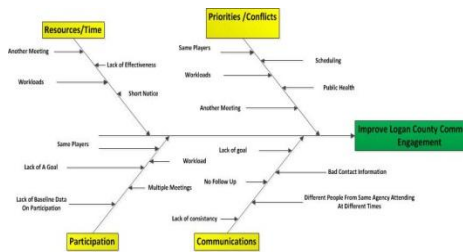
2. Assemble the Team

1. Administrator Logan County
2. Two Health Educators
3. Turning Point Field Representative

3. Examine the Current Approach

- Community partners showed little interest.
- Meetings met but little was accomplished.
- Lack of consistency and goals at meetings.
- Same players at the table at every community meeting

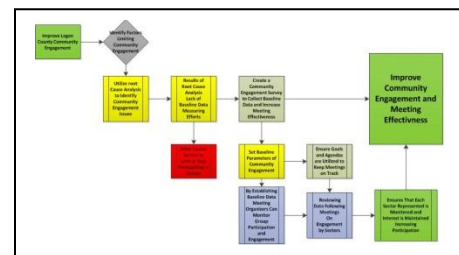
Root-Cause analysis was conducted to identify factors that have affected community engagement.



4. Identify Potential Solutions

We believe that we can increase community engagement by implementing the following steps into our engagement efforts.

- Select key dependable community members.
- Limit the number of meetings.
- Create agendas stating the goal of each meeting.
- Have all participants complete a meeting effectiveness survey following each meeting.
- Analyze survey results to ensure engagement stays above the 50% engaged for each sector.



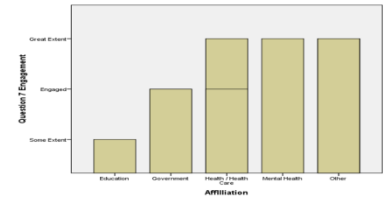
5. Develop an Improvement Theory

If a clear and concise meeting strategy is employed that includes agendas with goals that are met with each meeting; the engagement of each person to that meeting is measured; results analyzed following each meeting, the community engagement can be measured and maintained to ensure goals are met.

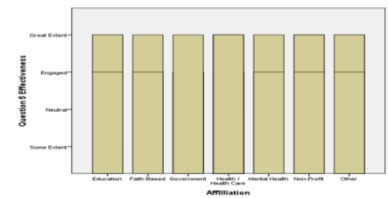
Aim: By March 1st 2011 the Logan County Health Department will improve community engagement and health improvement planning processes as evidenced by:

1. Increasing the scope of partnership by 25% (2 Public Health Sectors).
2. An increase in average score from 80% to 90% on the Meeting Effectiveness Survey and maintenance of an 80% response rate on the surveys following the meeting.
3. Completion from 0 to 2 assessments of the MAPP process demonstrating progress towards a CHIP (Community Health Assessment, NPHPSP Local Assessment.)
4. An improvement from none to 100% of a local strategic plan through the Step UP performance management web-based system.

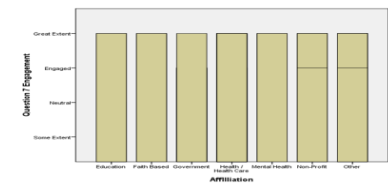
On Engagement 60% were engaged to a great extent and 30% reported they were Engaged. 100% of those surveyed responded.



The fourth meeting results were cumulative of all the meetings. Meeting Effectiveness rated at 46.9% engaged and 43.8% were engaged to a great extent.



On Engagement 65.6% were engaged to a great extent and 25% reported they were engaged. 100% of those surveyed responded. We also had an increase of participation from sectors with emergency management and another nonprofit coming to the table.



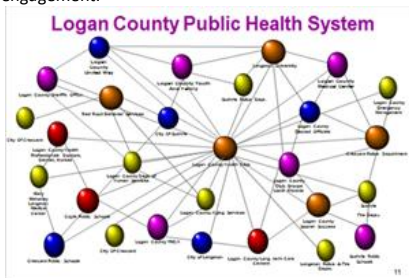
Following the fourth meeting the group had completed and reviewed a community health assessment, and completed the NPHPSP Local Assessment; as well Forces of Change with a discussion on threats and opportunities. This exceeded the original goal of completing only 2 of the MAPP assessments. The team also completed 50% of a local strategic plan through the Step UP performance management system with 100% completion scheduled on or before 3/18/2011.

DO

Test the theory for improvement

6. Test the Theory

- Set a series of meetings geared towards health improvement planning and completion of 2 MAPP assessments. (Community Health Assessment, NPHPSP Local Assessment)
- Identify and measure representation from each public health/business sector.
- Each agenda has a stated goal for each meeting.
- Survey 100% of participants on meeting effectiveness & engagement.

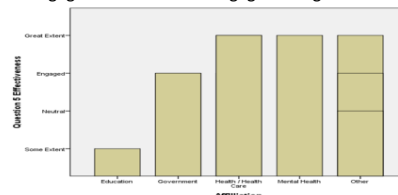


CHECK

Use data to check the results

7. Check the Results

The results from the initial meeting established a baseline of Meeting Effectiveness indicating that 40% were engaged and 40% were engaged to a great extent.



ACT

Standardize the improvement and establish future plans

8. Standardize the Improvement & Establish Future Plans

- Continue to utilize the format of meetings to include agendas with goals and utilizing the engagement effectiveness survey to ensure all partners are monitored and stayed engaged to complete the MAPP process.
- Utilize engagement effectiveness survey in all meetings hosted by the Logan County Health Department including internal meetings to ensure that the time spent is effective and progress is seen in each project.
- Complete a CHIP for Logan County following finalization of four MAPP assessments.